



GAT MONTHLY MEMBERSHIP PROGRESS REPORT

Results as of: 7/31/2022

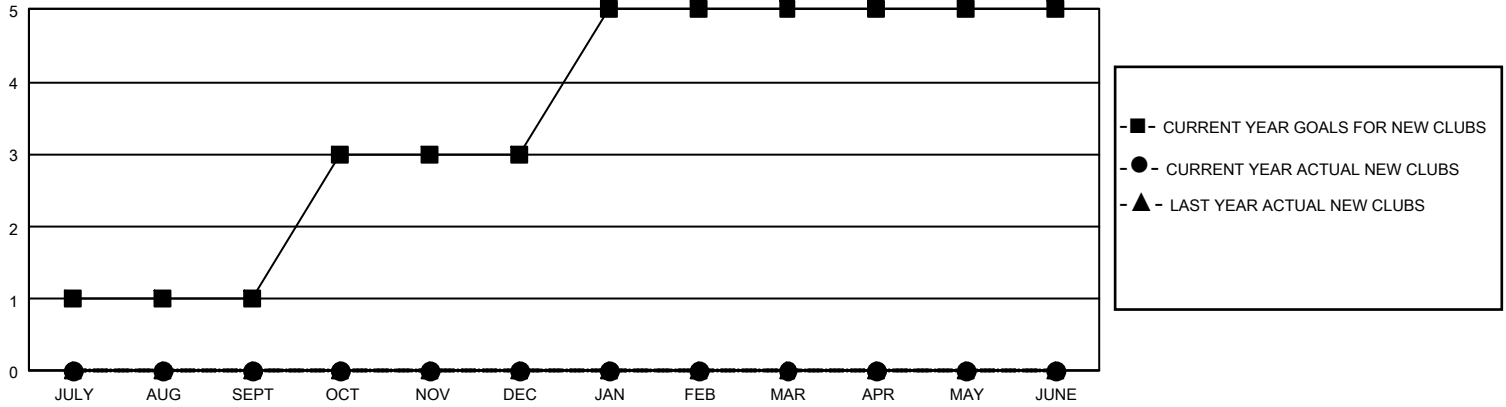
GMT Constitutional Area 2, Group C

REPORT DOES NOT INCLUDE CLUBS IN UNDISTRICTED AREAS.

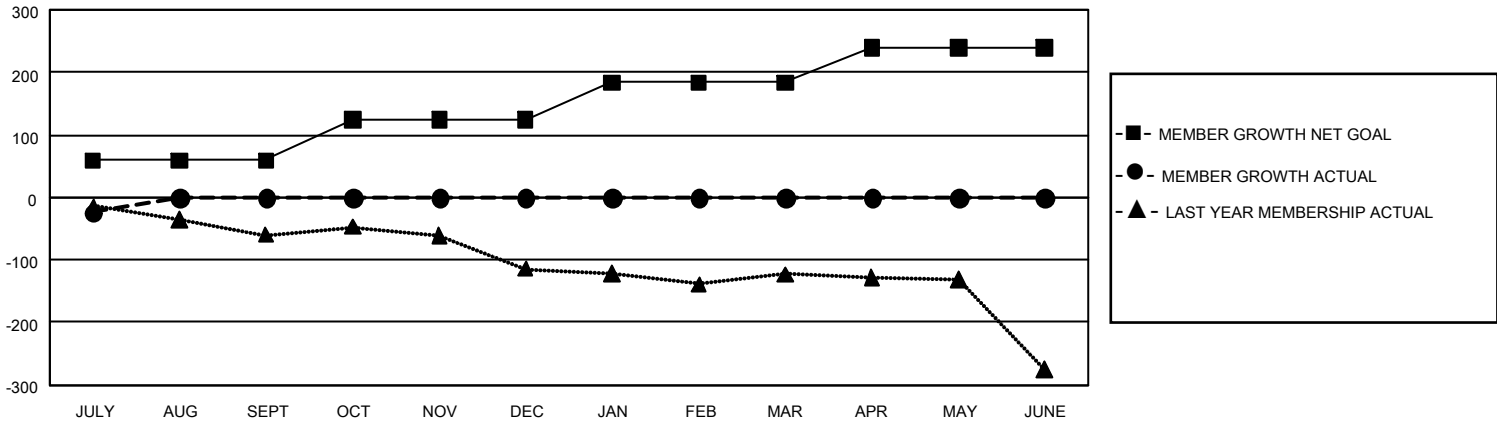
Clubs			
RESULTS FOR 2022-2023			
QUARTER	NEW CLUB GOAL	NEW CLUBS	DROPPED CLUBS
JULY/AUG/SEPT	3	0	0
OCT/NOV/DEC	6	0	0
JAN/FEB/MAR	6	0	0
APR/MAY/JUNE	0	0	0

Members			
RESULTS FOR 2022-2023			
QUARTER	MEMBER GROWTH NET GOAL	MEMBER GROWTH ACTUAL	DROPPED MEMBERS ACTUAL (including transfers)
JULY/AUG/SEPT	59	4	27
OCT/NOV/DEC	65	0	0
JAN/FEB/MAR	60	0	0
APR/MAY/JUNE	55	0	0

GOALS AND ACTUAL NEW CLUBS CUMULATIVE



GOALS AND ACTUAL MEMBERS CUMULATIVE



DROPPED CLUBS: 0	
DROPPED MEMBERS	
DECEASED	3
CLUB CANCELLED	0
OTHER	24
TOTAL	27

2 CLUBS OF 159 ADDED 1 OR MORE NEW MEMBERS

[CLICK HERE FOR CUMULATIVE MEMBERSHIP DATA](#)

GENDER DISTRIBUTION	
MALE	2,250 (66.31%)
FEMALE	1,143 (33.69%)
NON BINARY	0 (0.00%)
PREFER NOT TO ANSWER	0 (0.00%)
TOTAL FAMILY UNIT MEMBERS	625
FAMILY MEMBERS PAYING HALF DUES	319